

# JELD-WEN Express™

Quick Quote Update

March 2011

JELD-WEN Express™ explains the latest features and benefits for the full breadth of our window, door and patio door lines effective in the current Quick Quote release. **Please visit our Partners Portal the week of March 14, 2011 to download the latest release.** Our dealer newsletter is yet another way in which JELD-WEN strives to be your most reliable source for windows and doors. We invite you to share JELD-WEN Express™ with your sales team. If you need more copies, have questions or suggestions, please contact your JELD-WEN Dealer Sales Representative.

## ALIGNED PREFINISHED INTERIORS FOR WOOD WINDOWS

All JELD-WEN® wood window collections (Custom, Silestone EX, Tradition Plus and Builders) are now available with improved and standard options for prefinished interiors. This range includes:

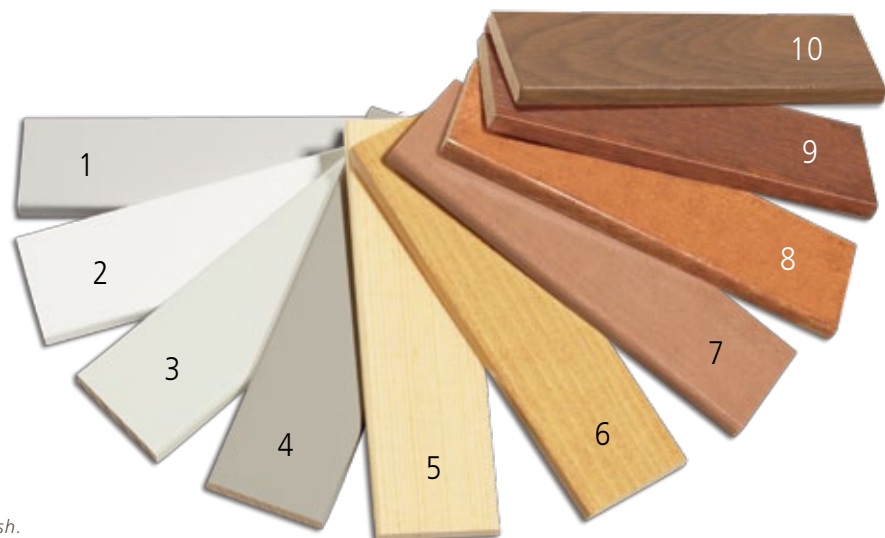
- Brilliant White, Desert Sand and Ivory (standard paint colors)
- Cider, Cordovan, Fruitwood, Walnut and Wheat (standard stain colors)
- Custom colors are available on a special quote basis; we can match any Sherwin-Williams® color that a customer may want.

We've also changed the process of applying stains to pine. By adding a wood prep coat, we can achieve a richer, more consistent finish. You're sure to notice this difference on all new orders with pine prefinished interiors.

See all the new prefinished options in the new sample chain we're offering, and look for a new sales tool to replace the current pine sample chain later this year.

Contact your JELD-WEN sales representative for assistance in obtaining your prefinished sample chain.

1. Primed
2. Brilliant White
3. Ivory
4. Desert Sand
5. Clear Lacquer
6. Wheat
7. Cider
8. Fruitwood
9. Cordovan
10. Walnut



*Colors shown may not match final finish.*

**NOTE:** As we transition in our new program, any orders in Quick Quote with the previous colors will need to be executed on or before April 29, 2011.

## SITELINE EX HARDWARE CHANGE

Siteline EX Wood patio doors are now stronger and more secure, thanks to upgraded hardware. The offering includes an anti-slam feature and robust hinges, which can be adjusted both vertically and horizontally and carry a higher load capacity than before. Swinging patio doors will feature new single-point or multipoint hardware, and sliding patio doors will feature new multipoint hardware. And for consistency, the handle sets are similar to those available for our Custom Wood and Tradition Plus Wood patio doors.

As was previously communicated, a simple handle set change out is not possible so we are offering a 60-day display and sample program that began on February 7th and comes with a special 70% discount on all **replacement** display and sample orders for Siteline EX patio doors. You must place an order via our standard Display & Sample process and be sure to call out "replacement" on the quote and enclose or attach a picture of the existing display or sample that is being replaced. This program is good for all replacement orders placed on or before **April 8th, 2011**.

The range of hardware finishes has also been expanded to include:

- Polished Brass, Antique Brass, Brushed Chrome, Polished Chrome, Oil-Rubbed Bronze\*, Satin Nickel and Powder-Coat White
- Optional PVD Polished Brass and Satin Nickel finish for extra protection from the elements (available for new handle sets only)
- **Oil-Rubbed Bronze 25% price reduction**

\* Oil-Rubbed Bronze will change in appearance over time.



## EPIC® COMMERCIAL DOOR ENHANCEMENTS

There are several new additions to our Epic® commercial door line, including sidelights, transoms and a range of commercial hardware and rail options for outswing doors. The hardware options, which are available in Bronze or Satin, include:

- An exit device—a push bar
- A closer device
- Commercial handle sets and deadbolts
- A kick plate
- Extruded 11" bottom rail



## CUSTOM WOOD TILT AND TURN ADDITIONS

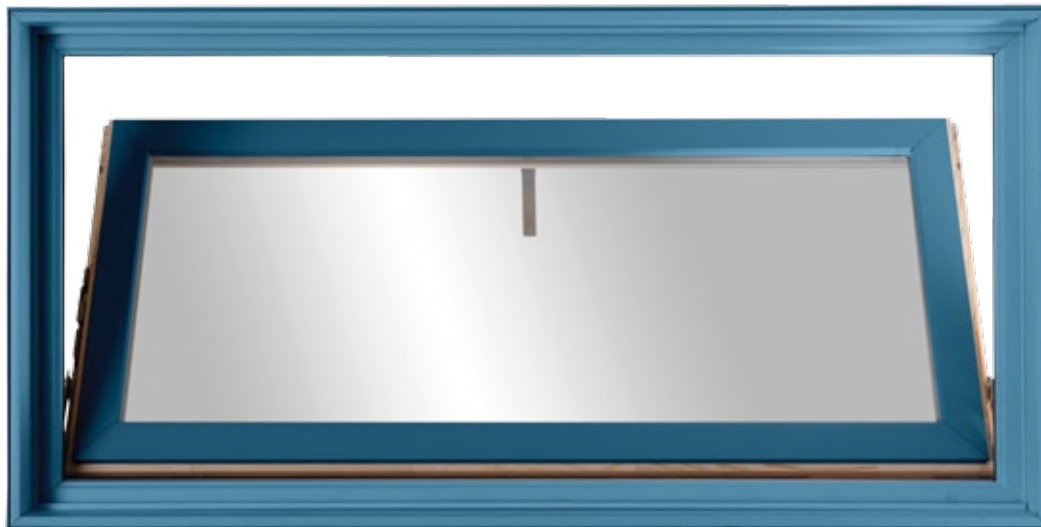
We are excited to announce the addition of a true Hopper window to the Tilt & Turn offering. The Hopper window is a compliment window to the Tilt & Turn that opens only one way, inward from the top for added ventilation applications. Many projects call for a Hopper window in an area that requires a wider window and we can achieve these demands in a couple of size configurations. The Hopper can be ordered up to a 72" x 32" or 64" x 48". A Hopper comes with a DP 65 rating on sizes up to 32" in height and a DP 50 on sizes taller, up to 48".

The JELD-WEN Tilt & Turn window has created a great deal of interest in the market and a desire for larger sizes with exceptional performance ratings. We are proud to be able to now offer a Custom Clad Tilt & Turn window up to 60" x 72" with a DP 50 rating.

Both of these exciting additions will be available in Quick Quote beginning April 4th, 2011. Please contact your JELD-WEN sales representative with any questions.



Tilt and Turn



Hopper (rendering is for demonstration purposes only - actual product may vary)

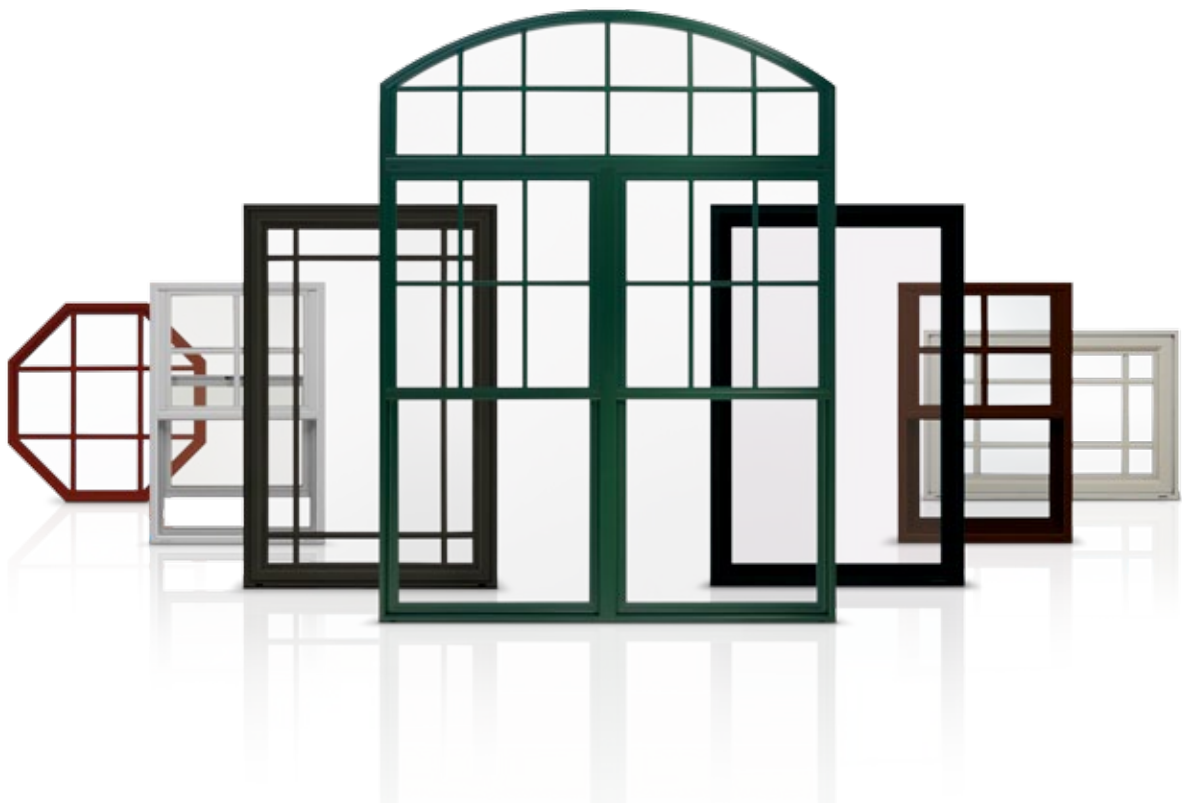
## CONSOLIDATED VINYL COLLECTIONS

In 2011, the extensive JELD-WEN® vinyl product offering will be consolidated into fewer product lines. This streamlined organization is designed to be easier to understand and will allow JELD-WEN® vinyl windows and doors to be marketed nationally rather than regionally.

The first step in this consolidation process involves combining Premium Vinyl Windows and Premium RS windows and will occur in the March QQ release.

- The combined product line will be called Premium Vinyl
- The Premium RS features especially for the replacement market will now be available on Premium Vinyl windows; for example, EverTonE™ painted exteriors and woodgrain laminate interiors (available in the eastern U.S.)
- Extension jambs will be available for all Premium Vinyl windows except double-hung and double-slide that have pine, red oak, or maple veneers or primed or vinyl-wrapped finishes; woodgrain laminate will not be offered on extension jambs
- Upgrade hardware packages are available in Antique Brass, Bright Brass and Brushed Chrome

- All products are available with nail fin, block frame and pocket frame options
- Brickmould and flat casing frame options are available for casement and awning windows
- In the eastern U.S., Premium Vinyl products will include:
  - » Single-hung side-load windows
  - » Double-hung windows
  - » Single slide windows
  - » Double slide windows
  - » Casement windows
  - » Awning windows
  - » Picture windows (including radius and geometric designs)
  - » Bay windows
  - » Sliding patio doors
- In the western U.S., the Premium Vinyl collection remains the same



## SCREEN CHANGE TO PREMIUM AND BUILDERS VINYL

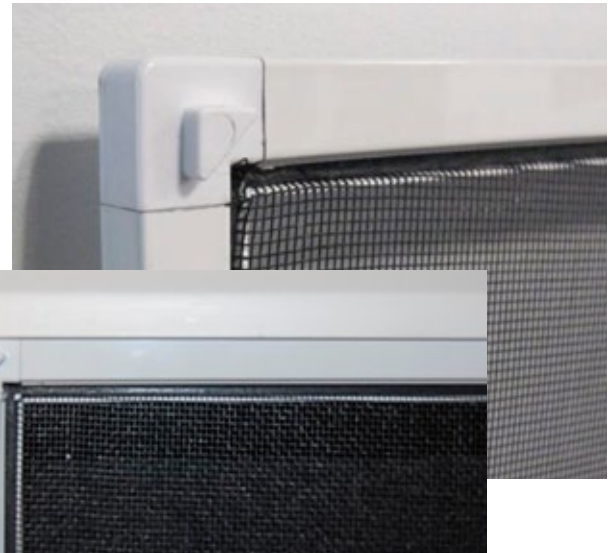
In the newest QQ catalog, Premium Vinyl casement and awning windows and Builders Vinyl double-hung windows will be available with improved screens.

The redesigned Premium Vinyl casement and awning screens are heavier and feature:

- Distinctive detailing for an attractive interior appearance
- A tension clip built into the screen corners for easier removal; simply raise the screen into the top of the window frame until the tension clips release at the bottom

The new Builders double-hung screen has a box frame design and replaces the old flange frame screen.

- The screen fits into the screen channel on the exterior frame of the window for a more streamlined, attractive appearance
- Stops built into the corner keys on the screen frame help hold the screen in place
- Clear pull tabs, positioned on the screen frame jambs, make screen removal easier than the previous screen design



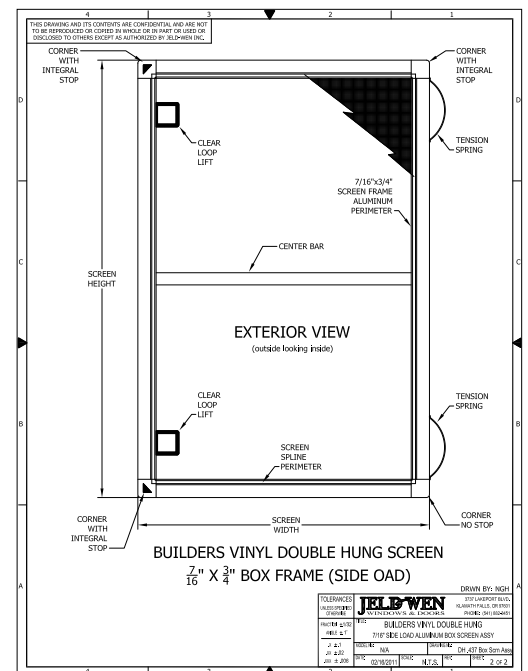
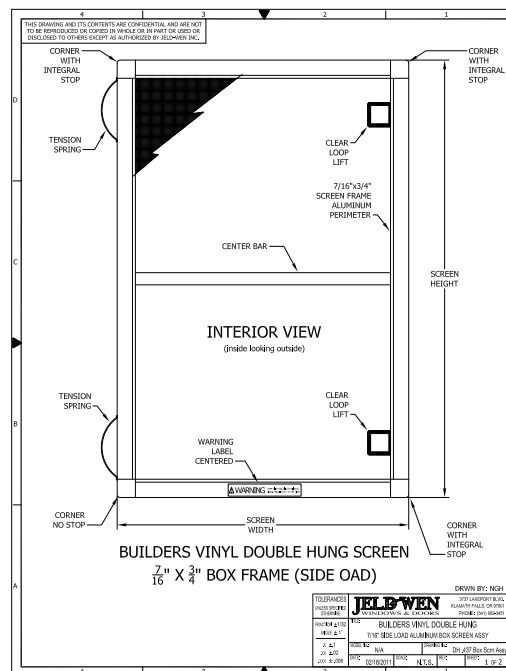
New



Current



Clear Pull Tabs



## FIBERLAST™ FIBERGLASS EXTERIOR DOORS

JELD-WEN is pleased to announce the next generation of fiberglass doors—FiberLast™ exterior doors. Each one has a door skin with an exclusive, patent-pending composition of fiberglass, polyurethane resins and 35 percent recycled material (as certified by SCS). This skin is nearly twice as thick as most fiberglass door skins, and extensive testing proves this new door's durability. For instance, it was tested in accordance with the ASTM D1037 accelerated weathering test, which is typically used for products that are highly susceptible to the weather (e.g., cement board siding and composite decking).

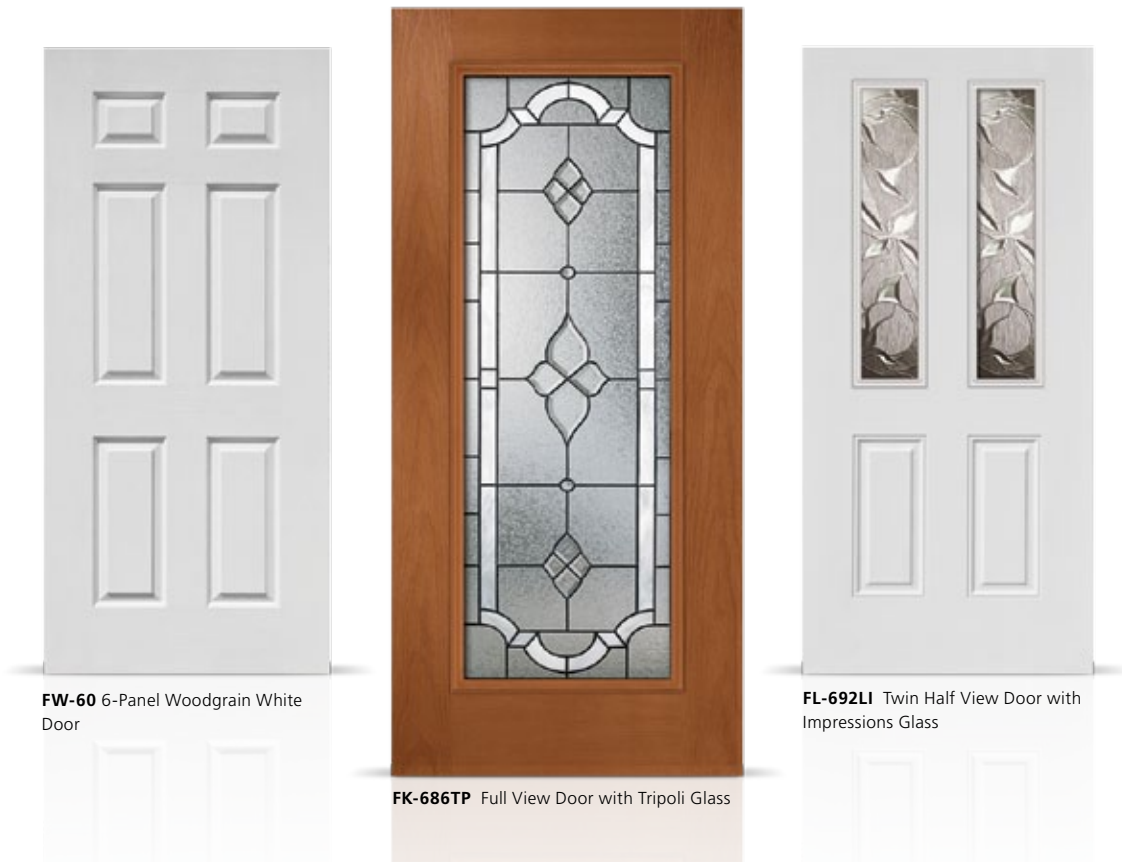
In addition to its durable door skin, a FiberLast exterior door features

- An AuraLast® wood top rail and stiles, plus a composite bottom rail, for protection from wood decay, water saturation and termites
- A full-length LVL lock block for added stability and weight
- A DP-80 rating to meet Florida Building Code and Texas Department of Insurance certification (when ordered in an approved system)
- More stability under extreme heat and cold with thermal expansion 93% less than standard fiberglass and 90% less than steel doors

You can also select:

- Smooth white or grained white for painting, or grained tan for staining
- A 6-panel, sunburst, half-view or full-view design (more styles are planned and will be available soon)
- Coordinating sidelights
- 6' 8", 7' 0" or 8' 0" heights, and 2' 6" or 3' 0" widths; custom sizes also available
- ENERGY STAR® qualified options for added energy efficiency

For more information, including availability in your area, please contact your JELD-WEN sales representative.



**FW-60** 6-Panel Woodgrain White Door

**FK-686TP** Full View Door with Tripoli Glass

**FL-692LI** Twin Half View Door with Impressions Glass

## AUTHENTIC WOOD EXTERIOR AND INTERIOR DOORS

The new Authentic Wood Door Program combines high-quality wood doors with competitive prices and lead times. In fact, a wide variety of exterior and interior door designs are in stock and ready to ship out of the program's Austell, Georgia, location. Select from several wood species, sizes and versatile designs. French door designs and coordinating sidelights and transoms are also available. And for added convenience, we offer a prehung option.

To learn more about the program, designs and options, please contact your JELD-WEN sales representative.

### Exterior Doors



**5028V** Knotty Alder V-groove Door



**5104** Meranti Mahogany Door, 4-Lite Beveled Glass



**7201** Meranti Mahogany Door, Ashmore Decorative Glass

### Interior Doors



**0028** Sustainable Pine Door



**0022V** Knotty Alder V-groove Door



**Pine** Authentic Recipe Pantry™ Door



**Oak** French Door, Harvest Decorative Glass