

# JELD-WEN Express™

QuickQuote™ Update

December 2011

JELD-WEN Express™ explains the latest features and benefits for the full breadth of our window, door and patio door lines effective in the current QuickQuote™ release. Our dealer newsletter is yet another way in which JELD-WEN strives to be your most reliable source for windows and doors. We invite you to share JELD-WEN Express™ with your sales team. If you need more copies, have questions or suggestions, please contact your JELD-WEN Dealer Sales Representative (DSR).

## WOOD WINDOWS & PATIO DOORS

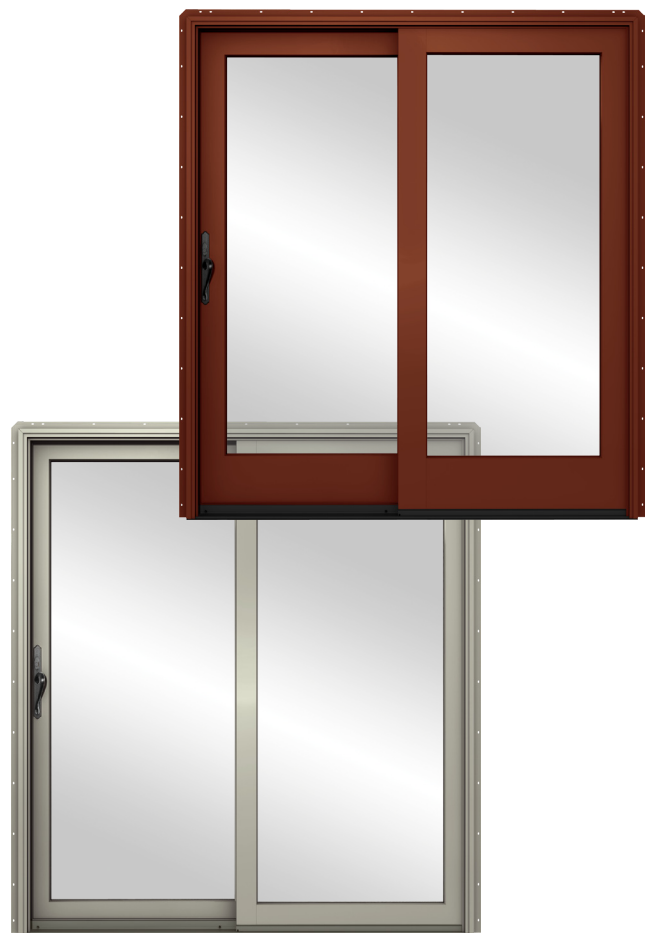
### TRADITION PLUS SLIDING PATIO DOOR

In this December edition of our JELD-WEN QuickQuote™ release, we are proud to introduce a newly designed premium sliding patio door in our Tradition Plus Wood product line. This high performance sliding patio door, with many features and benefits, allows you to compete in the premium level patio door market. The Tradition Plus sliding patio door is available with a number of different configurations and options, and will replace the current Tradition Plus French View sliding patio door **(note: Tradition Plus French View Sliding patio Door will not be available for order after December 31).**

The new design incorporates features that currently live in our Tradition Plus product to complement the full line. Further, we implemented popular and functional elements of our previously launched Builders Clad-Wood sliding patio door. Key features include:

- » Integrated use of a fiberglass sill and fiberglass interlock
- » Corner key construction on the top and bottom of the door and a ball check weep system for superior performance
- » Standard DP 40/50 rating with a DP 65 option in many configurations and sizes
- » 2 panel standard widths of 5/0 and 6/0 with heights of 6/8 and 8/0 (custom sizes are available)
- » Sidelights and transoms are offered in many configurations to complement the product line

- » Narrow stile (standard) and wide stile options are available



*continued on page 2...*

...continued from page 1

Both the wide and narrow stile doors are available with an aluminum clad exterior. A wood exterior option is also available on the wide stile door primed or in clear pine. There are several configurations in this offering with 2, 3, and 4 panel options as well as a bi-parting choice that is part of the 4 panel (or quad) configuration.

Narrow stile configurations include:

- » Sidelights
- » 2 panel
- » 3 panel
- » 4 panel (Not available as a bi-parting door)

Wide stile configurations include:

- » Sidelights
- » 2 panel
- » 3 panel
- » 4 panel (Available in bi-parting and standard doors)

## Watch for our digital launch kit, available December 5, 2011

The kit will include our standard Tips & Tech sheet, FAQ sheet, and a detailed outline of our sales promotion for this product. In addition, a 6-page sell sheet outlining the various configurations and features is available. Each of these items will be launched electronically in HTML format and a print version of the sell sheet will be available to order from XPressPak.



## FSC CERTIFIED WOOD WINDOWS & PATIO DOORS

Beginning **December 1, 2011**, JELD-WEN Custom Wood Windows and Patio Doors are available with optional Forest Stewardship Council (FSC) certification. JELD-WEN is excited to offer this option on our Custom Wood windows and patio doors from our Bend, Oregon factory (pine species only). In the Bend catalog under the certification tab, choose FSC as an option. FSC promotes the responsible management of the world's forests.

The FSC Certification may help your customers earn points in the U.S. Green Building Council's LEED certification Materials and Resources Credit 7: Certified Wood. Beginning **December 2nd** look for more FSC information and documentation at our JELD-WEN GREENdoc™ site (<http://jeld-wen.ecoscorecard.com>).

JELD-WEN strives to source timber from suppliers who abide by local laws, rights, and traditions and whose practices are sustainable and renewable. We participate in and support the wood certification systems of both the Sustainable Forestry Initiative (SFI) and the Forest Stewardship Council (FSC). This dual certification for our Custom

Wood line not only provides customers options to meet requirements in a variety of green building certifications, but it also provides flexibility to meet customer's personal preferences for sustainable harvested wood. SFI continues to be an available option at all JELD-WEN wood window factories.



The mark of  
responsible forestry



## EPIC® WINDOW OFFERING EXPANDED

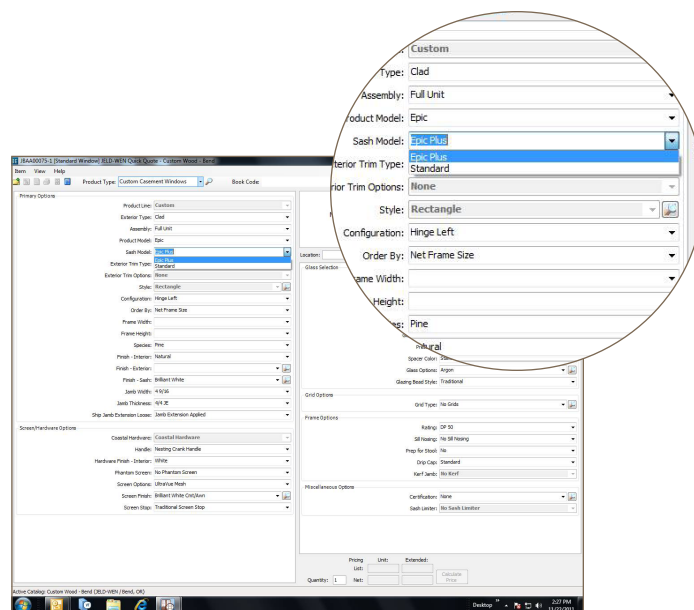
In the September 2011 JELD-WEN QuickQuote™ release we introduced the newly designed Epic® Plus casement with larger size availability and improved performance ratings.

Our initial plan was to phase out the original Epic casement and awning with the introduction of a compatible redesigned Epic Plus awning. After further consideration of feedback from our valued customers, we are not discontinuing our original Epic windows. As a result, with this release we have the Epic and Epic Plus casements and awnings.

When quoting out of the Custom Wood Window catalog for casements or awnings, choose either Epic (original) or Epic Plus (new design) in the product model drop down.

Epic Plus provides the option of our heavier frame and hardware to allow for larger sizes with higher performance ratings and more solutions for the commercial market place. Epic (original) provides the confidence you already have in selling commercial solutions not requiring larger sizes or a heavier frame and hardware.

Look for an updated and complete Epic offering product catalog in the first Quarter of 2012.



## CUSTOM WOOD FOLDING DOOR SYSTEMS NOW CERTIFIED

With our latest JELD-WEN QuickQuote™ update, our Bend catalog Custom Wood and Aluminum-Clad folding door systems are now certified up to a DP 35 rating for air, water, and structural performance. DP 35 is available in many sizes and configurations with panel size maximums of 3/0 x 8/0. We have certified folding door systems up to a 6-panel configuration. This allows for certified systems up to 18 feet wide and 8 feet tall., providing more options when bidding for projects where certified product is required.

Panel sizes and configurations, as well as hardware choices, effect DP ratings; therefore corresponding DP ratings will display while configuring your system in JELD-WEN QuickQuote™ before placing the order.

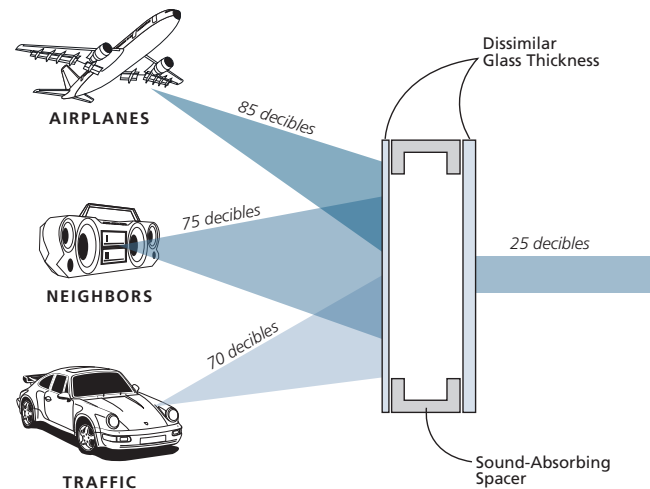
Please see your JELD-WEN DSR for questions regarding this new exciting option.



## NATIONAL—VINYL WINDOWS STC/OITC

Sound transmission has been a growing area of concern and a requirement for specifying many fenestration products. Sound Transmission Class (STC) typically refers to the reduction in sound transference between an interior partition such as an interior door, wall or insulation. Outdoor-Indoor Transmission Class (OITC) is used to indicate the rate of sound transmission between outdoor and indoor spaces and is tested on a lower frequency. With this edition of JELD-WEN QuickQuote™, you can now order vinyl window and patio door units by specifying the desired or required STC/OITC rating from the drop-down menu options in the glass category of your JELD-WEN QuickQuote™ catalog.

**Note:** Selecting a STC/OITC rating may affect other glazing options.



## GLASS THICKNESS

Here is a new twist on an existing option; now you can “custom select” your glazing stack. Selecting the glass thickness in your insulated glass unit is now an active option. The last selection in the glass option category of JELD-WEN QuickQuote™ has a drop down box that houses the available glass stack configurations for the unit you are specifying. There is a default to “Standard Default Thickness” which is determined by the unit, and size. Beyond that, now you can select variable thickness in pre-configured glass stacks in the same drop down menu. Visit [jeld-wen.com/pro-center/technical-documents](http://jeld-wen.com/pro-center/technical-documents) for complete glass configurations and respective performance ratings.

## PATIO DOOR SCREEN NAMES

We’ve adopted a new naming convention for Vinyl patio door screens. This change is intended to more accurately convey the type of screen being ordered with the unit. Screen name conversion is below:

- » Heavy Gauge Screen Frame is now called “Standard”
- » Extruded Screen Frame is now called “Select”

**Note:** there has been no material or construction change within the screen platform.

## BRICKMOULD AND FLAT CASING GET A NEW TRIM

The Flat Casing and Brickmould series casement and awning products are now available with a Simulated Meeting Rail (SMR). Achieve that perfect architectural balance with the 2-1/4” slightly beveled SMR option. These can be ordered through the SDL/GBG (Simulated Divided Lites/Grilles Between the Glass) attributor in JELD-WEN QuickQuote™ and can be ordered to match if ordering multiple units on one purchase order. (SMR available from Grinnell, Mt. Vernon and Ringtown)

## WANT A BEEFIER BRICKMOULD?

JELD-WEN Premium Vinyl is now available with an applied brickmould accessory. This accessory has been tested and approved on the single-hung, slider, picture, casement, awning, and patio door units.

Adding brickmould to JELD-WEN Premium Vinyl allows your customers to pair the aesthetic and functionality of the Brickmould/J-Channel with the efficiency of the high performance, triple-glazed (R-5) window, as well as with the warmth of three different laminate interior options, and the award winning MAG-Lock®.



## EXTENSION JAMBS FOR ALL

Extension jambs are now available on JELD-WEN Premium Double-Hung and Double Slide windows. They are available in Primed White, White Vinyl Wrapped, Red Oak, Maple, and Clear Pine and are available applied or shipped loose. The extension jambs are not pre-finished or available with laminate interior selection. (Available from Grinnell, Mt. Vernon and Ringtown)

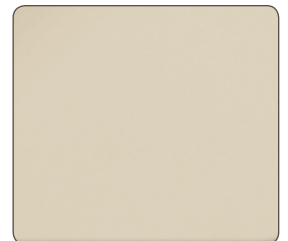
Customers of Grinnell can now order Marley's White composite extension jambs with their orders, loose or applied.

## VISTA CATALOG CONSOLIDATION

The consolidation of the Windowmaster El Cajon and the JELD-WEN Vista catalogs is complete with this release of JELD-WEN QuickQuote™. As of **January 3, 2012**, customers of JELD-WEN Vista will be able to place all orders for Vinyl and Aluminum from the JELD-WEN Vista catalog.

## ALMOND INTEGRATES WITH VISTA VINYL

Almond has joined White and Desert Sand in the Vista Vinyl color pallet as an integrated color choice for JELD-WEN Premium and JELD-WEN Builders vinyl. Not to be confused with EverTone™, this Almond color is mixed into the extrusion blend, and has consistent pigment throughout.



## PREMIUM VINYL 90 DEGREE UNIT

JELD-WEN Premium Vinyl has a new 90 degree configuration available as a picture/ fixed window. This unit is designed to maximize viewing area, increase natural lighting, and open homes up to breathtaking views. This unit is shipped as "open frame," meaning glazing is done in the field. (Available from Vista only)



Shown in aluminum. Now available in vinyl

## THE TRAPS ARE BACK...NEW FIXED TRAPEZOID SHAPES NOW IN PRODUCTION AT VISTA

JELD-WEN Premium and Builders Vinyl windows are now available in new trapezoid shapes:

- » Inverted Trap (aka bottom rake)
- » Sideways Trap (aka side rake top)
- » Inverted Sideways Trap (aka side rake bottom)

These shapes are perfect for achieving that architectural uniqueness.

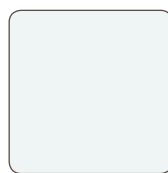
## ALUMINUM WINDOWS & PATIO DOORS

### PREMIUM ALUMINUM HARDWARE FINISH UPGRADES — VISTA

Premium Aluminum hardware will be available as Black, White, Silver and Desert Sand. Effective **January 3, 2012**.



Black



White



Silver



Desert Sand

## PRICE ADJUSTMENT

### BLINDS BETWEEN THE GLASS — PATIO DOORS

Due to increases we have incurred from our supplier, a modest price increase has been instituted on our blind between the glass products. Starting Wednesday, **November 30, 2011** we will be raising the list price on all wood and vinyl patio doors with the blinds between the glass option by \$33.33 for a two panel unit. If you have any questions about this, please contact your JELD-WEN DSR.